

# Laboratory Design Floor Plans

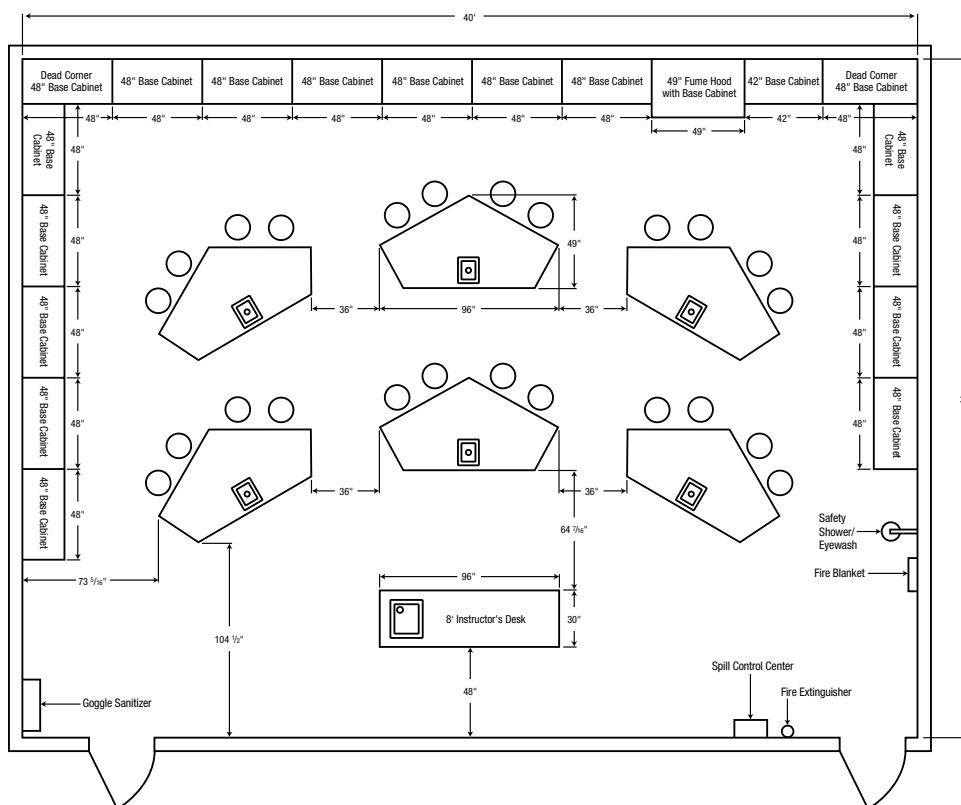
Flinn Scientific offers five standard laboratory floor plans but each can be customized to your specific needs. These designs are practical, cost-effective and maximize classroom supervision. Please call Flinn Scientific at 1-800-452-1261 to speak to a lab design specialist regarding additional options.

## Combination Classroom/Laboratory

Room Size 30' × 40' — 1,200 sq. ft.

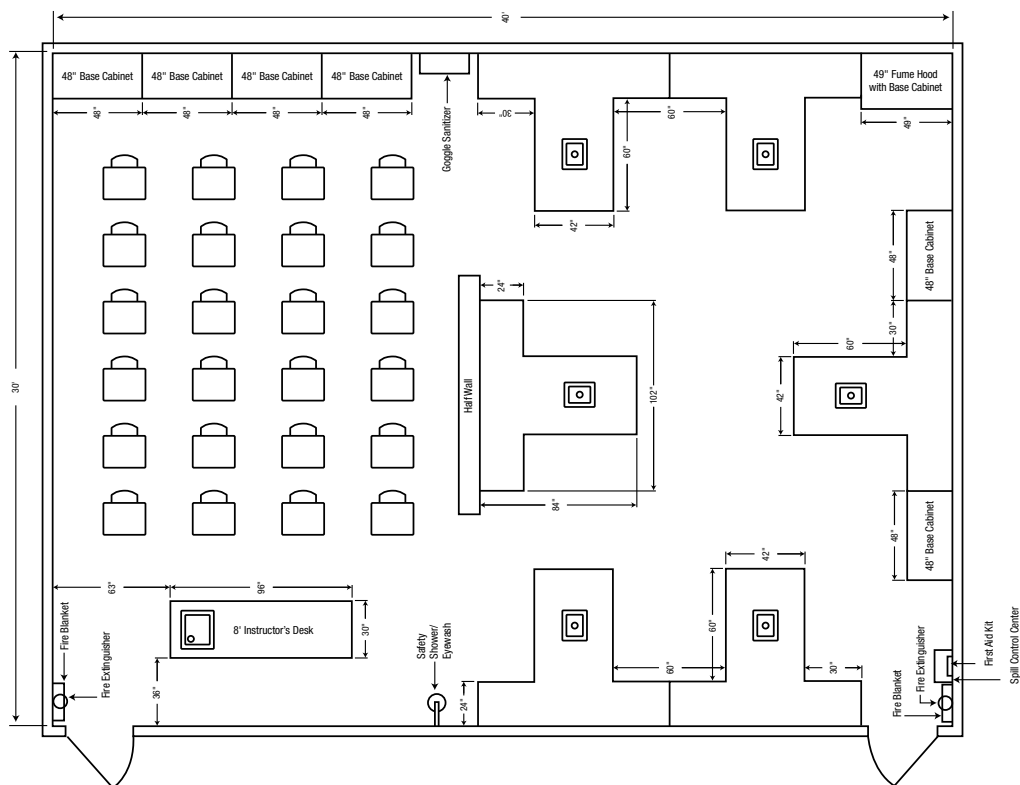
### Benefits

- Pentagonal workstations provide ample workspace (96" across at widest point) to support all types of equipment and activities.
- Provides excellent sight lines to the front of the room for demonstrations and lectures.
- Workstation shape has students facing one direction, making supervision and demonstration easier for the teacher.
- Students sit on stools during class time. When lab activity starts, the stools are pushed under the lab table.
- Aisles are wide enough for foot traffic to flow freely and allow quick access to safety equipment.
- Plenty of storage space along the perimeter of the room and at each workstation.
- Fume hood is located away from busy traffic area.



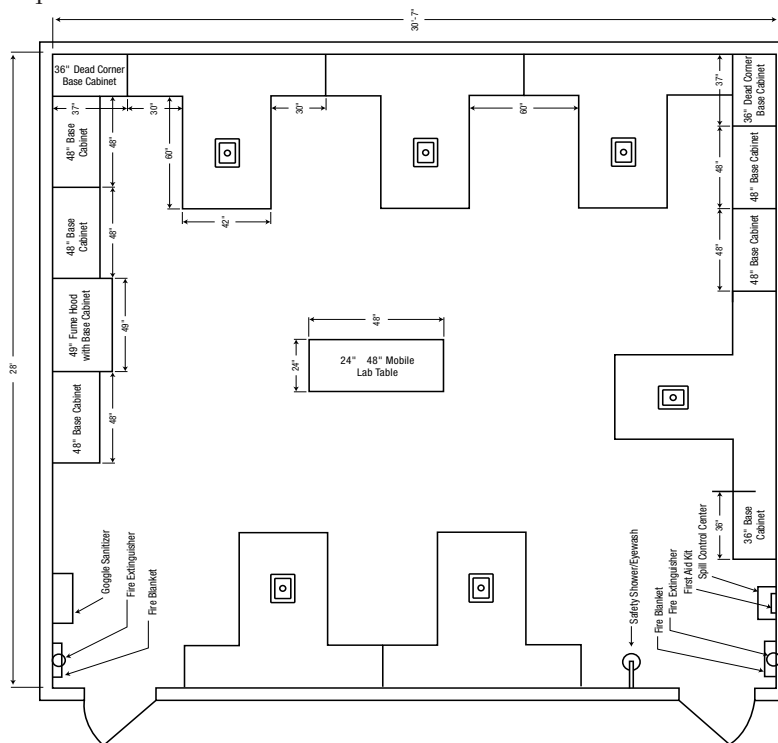
## Combination Classroom/Laboratory—Divided

Room Size 30' × 40'—1,200 sq. ft.



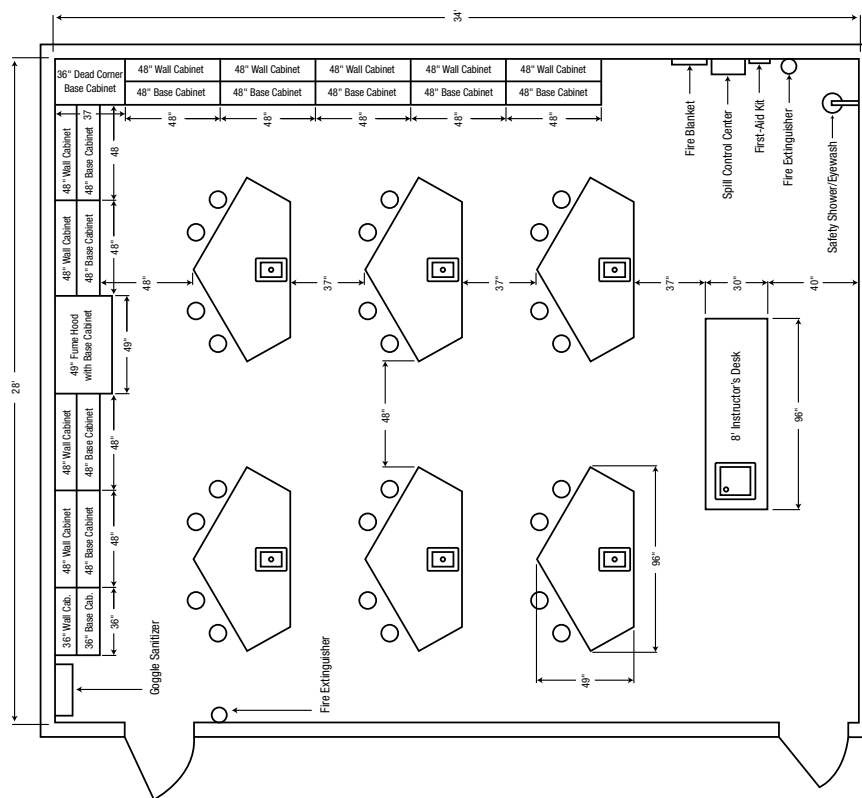
## 4-Student Perimeter Lab Tables

Room Size 28' × 30' 7"—840 sq. ft.



## Combination Classroom/Laboratory—Compact

Room Size 28' × 34'—952 sq. ft.



## Combination Classroom/Laboratory—Flexible

Room Size 38' × 30'—1,140 sq. ft.

